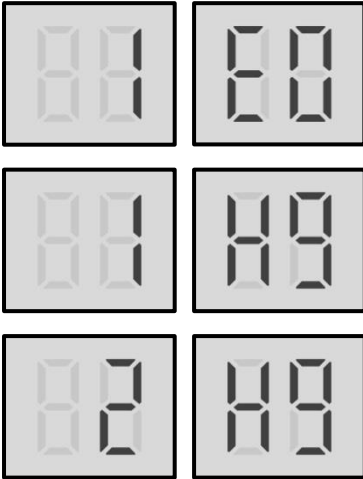


E0/H9 Troubleshooting

1 Digital display output



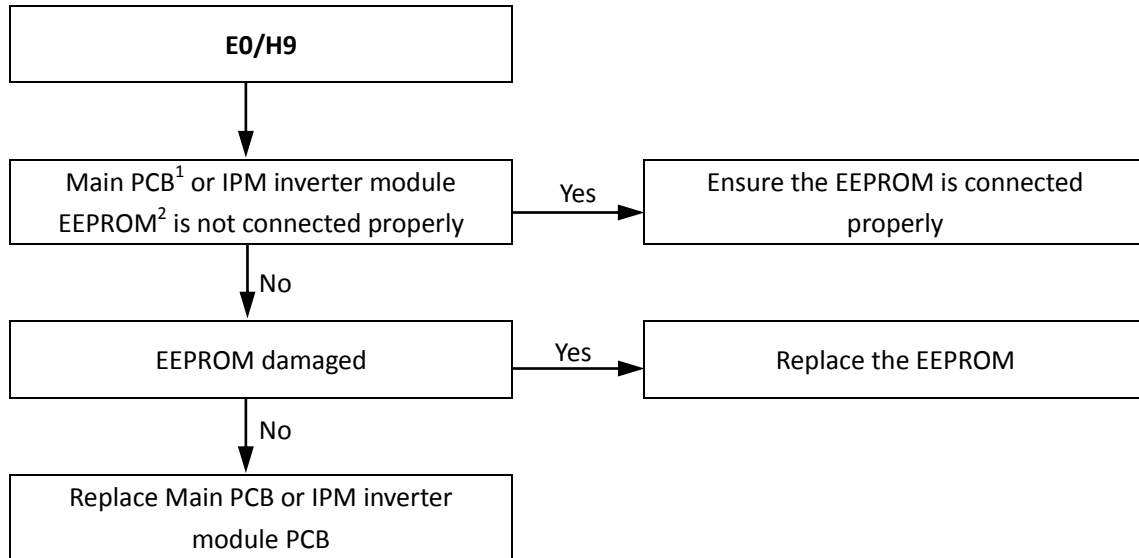
2 Description

- 1E0 indicates main PCB EEPROM error.
- 1H9 indicates IPM inverter module (compressor A) EEPROM error.
- 2H9 indicates IPM inverter module (compressor B) EEPROM error.
- All units stop running.
- Error code is displayed on main PCB and user interface.

3 Possible causes

- Main PCB or IPM inverter module EEPROM is not connected properly.
- Main PCB or IPM inverter module damaged.
- EEPROM damaged.

4 Procedure



Notes:

For 30kW and 60kW units,

1. Main PCB EEPROM is designated IC10 on the main PCBs.
2. Compressor inverter module PCB EEPROM is designated IC25 on compressor inverter module PCB.